



Lighting & Daylighting Simulations

Show us your space,
and we'll do the rest.

Prism Engineering can help you optimize your space with our daylighting and lighting simulation services. Our team of experts will guide you to an attractive, efficient, and cost-effective lighting and daylighting design that meets your project requirements.

Our lighting and daylighting simulations are tailored to meet the needs of our clients. With over 30 years of experience in B.C., (we're not going anywhere) we'll support you throughout the entire process.

How we work:

- Coordinate with architects and space designers as required for an accurate model
- Recommend measures to improve illumination levels and natural and artificial light distribution and uniformity
- Predict sources of potential glare, look at contrast ratios or balance of daylight within a space and recommend methods to reduce glare and heat gain
- Investigate viability of design options to meet your project requirements
- Produce easy-to-interpret graphical summaries of the daylight and artificial light in your space
- Provide support documentation for your LEED IEQc8.1: Daylight and Views—Daylight submission

Let the sun shine in. We can show you how.

Since the mid-20th Century daylighting has been considered an important part of building design, from the very first hand-written mathematical calculations the development of technology today has given us the tools to understand and visualize the effects of daylight in a space like never before.

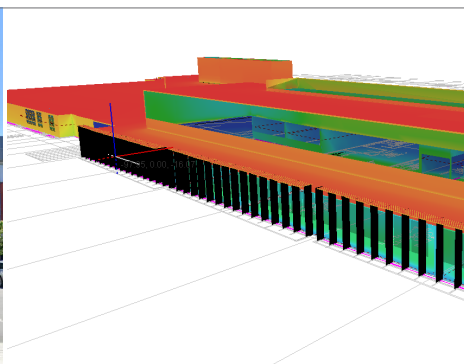
Whether implemented during the design and development stage of a new project, or used to provide documentation for code compliance and energy performance requirements, daylighting simulations help you to make the best use of daylight in your space.

Why use Daylighting?

- Reduce energy costs
- Improve general health and productivity of occupants
- Improve the aesthetics of your space
- Optimize energy performance, functionality and the indoor visual environment of your space

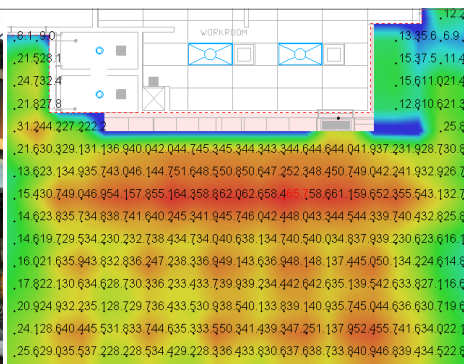
Project Experience

Our design team is lead by two LC certified lighting design professionals and six LEED professionals who ensure that our designs meet the highest standards.

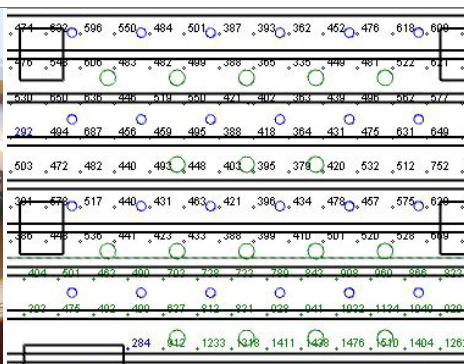
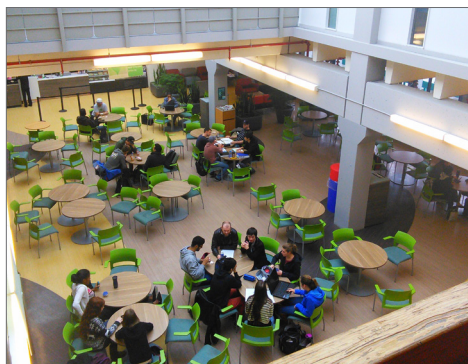


Prism modelled the daylighting contribution to a 3-storey Kitsilano Secondary School Renovation. Our team provided support documentation for LEED and Vancouver School Board submissions.

VSB



Prism has performed lighting simulations for several Starbucks locations to confirm the feasibility of new products and designs.



Prism evaluated energy-saving daylighting design options for an outdoor canopy on the BCIT Burnaby campus through simulations of artificial light and daylight.

