



How energy intensive is your school district?

Compare with others in the Lower Mainland & Vancouver Island

5TH ANNUAL PUMA **BENCHMARKING SUMMARY**

For BC School Districts: 2017 Calendar Year



saving you energy™

Scope

The sites included in the benchmarks are from the following BC School Districts that subscribe to monthly PUMA utility monitoring software & services:



About PUMA

PUMA comprises a combination of software and services from Prism Engineering that track over 15,000 electrical, natural gas, water, and other fuel accounts for government, commercial, and institutional customers. Since launching online in 2009, more and more organizations have enlisted PUMA to help track and analyze building energy use.

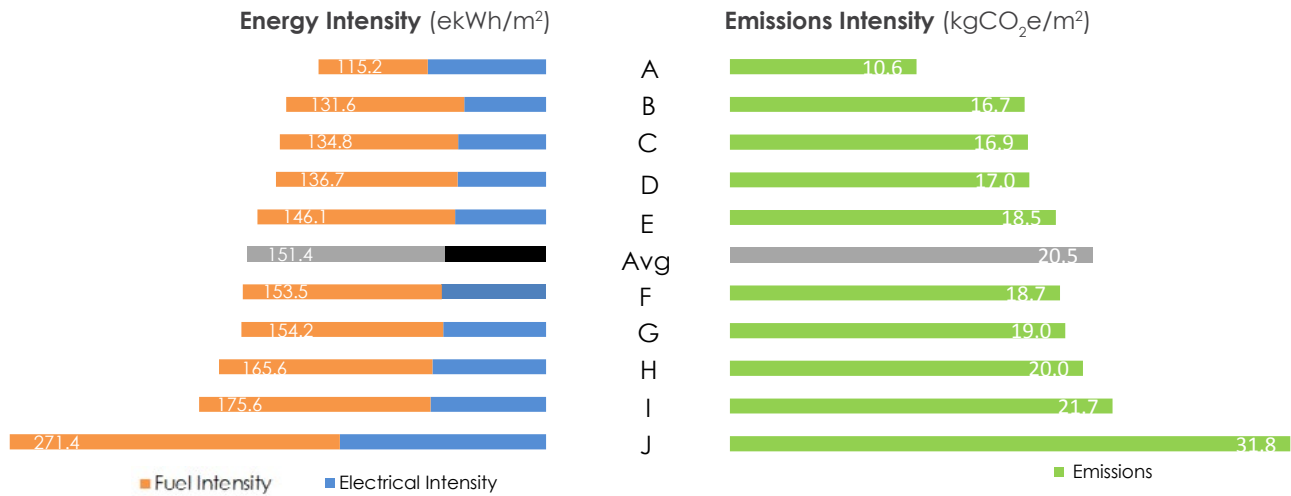
PUMA is currently used by over 20 Energy Managers, and more than 50 organizations across Canada. Our utility tracking software and services save time and money for owners of multiple properties by turning data into actionable information.

About this Report

Each year the PUMA team at Prism Engineering puts together a benchmarking report for school districts, advanced education and municipalities. Based on compiled data from PUMA, this report enables the comparison of similar sites across each sector.

www.pumautilitymonitoring.com

How energy intensive is your school district?



For 10 BC School Districts - Calendar Year 2017



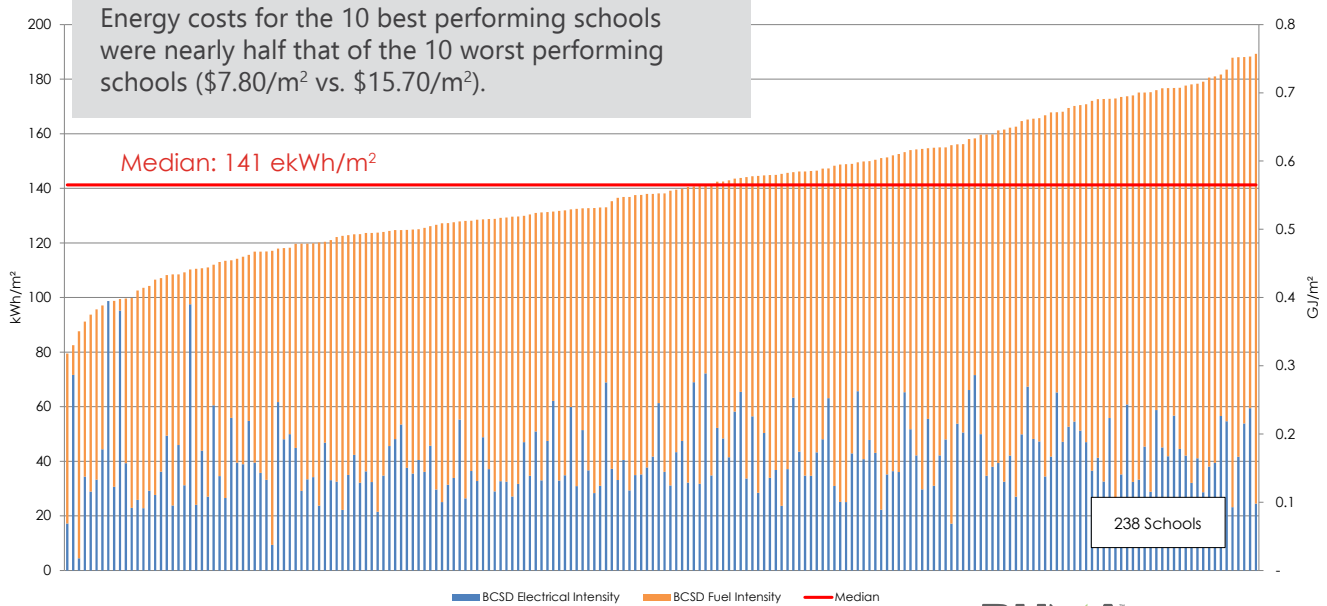
These districts are all in similar climatic zones so adjustments for weather are not needed. Energy Use Intensity (EUI) allows sites of different sizes to be compared.



Are your schools better or worse compared to schools in BC?

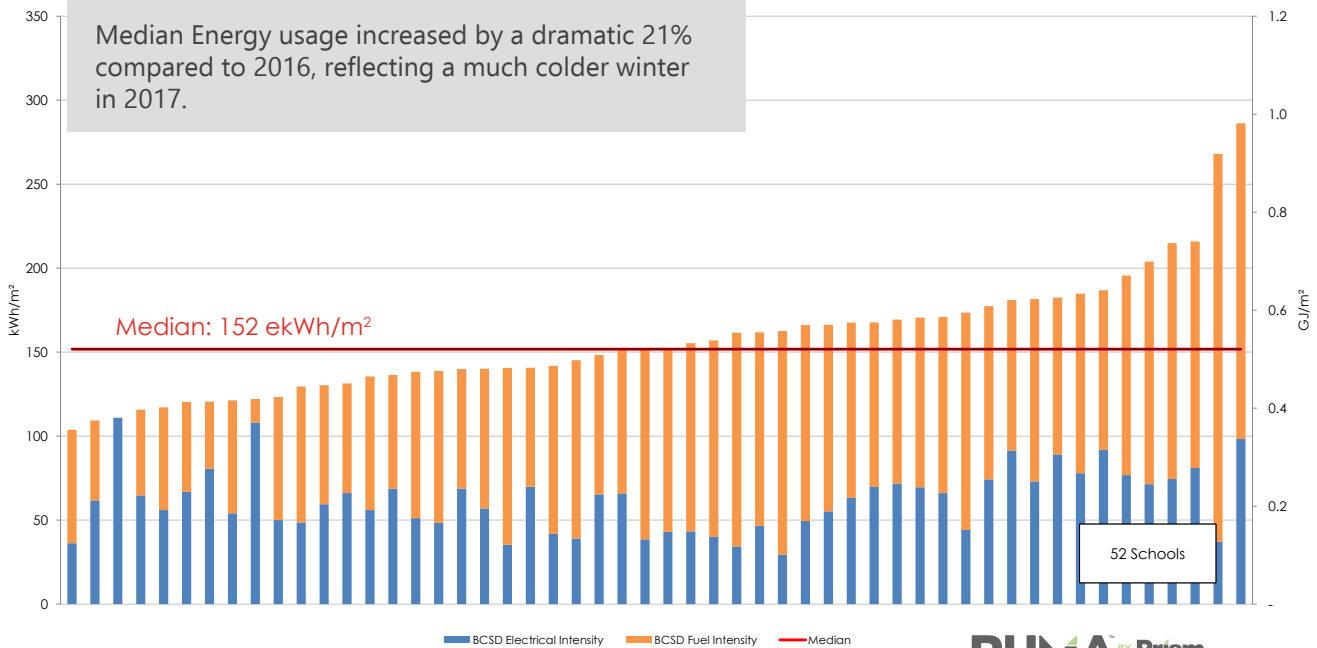
BC Elementary Schools EUI Calendar Year 2017

Energy costs for the 10 best performing schools were nearly half that of the 10 worst performing schools (\$7.80/m² vs. \$15.70/m²).

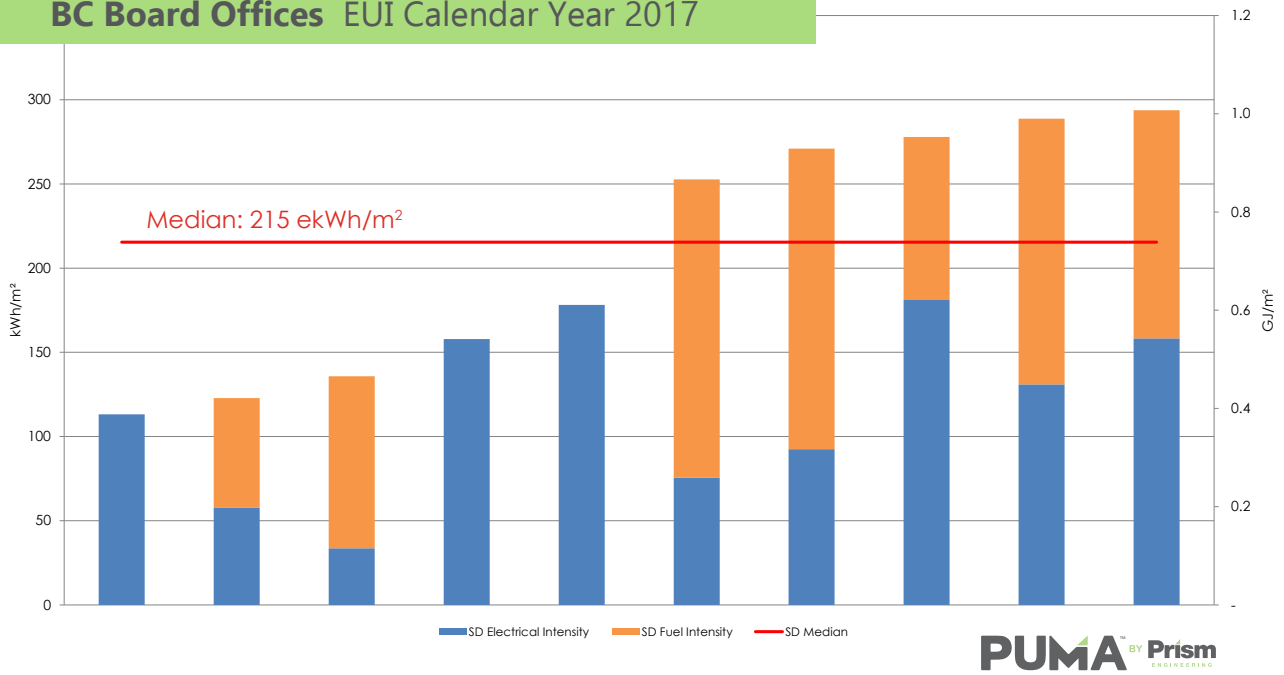


BC Secondary Schools EUI Calendar Year 2017

Median Energy usage increased by a dramatic 21% compared to 2016, reflecting a much colder winter in 2017.



BC Board Offices EUI Calendar Year 2017





Summary

School District Building Type	Median Energy Use per m ² (EUI)	Number of buildings in sample
Elementary	141 ekWh/m²	n=238
Secondary	152 ekWh/m²	n=52
Board Offices	215 ekWh/m²	n=10




PUMA is an affordable and effective way to compare the performance of all the buildings in your portfolio, including the ability to normalize for weather.

www.pumautilitymonitoring.com

Contact Duncan Wilcock to schedule a free demo:

E: duncan@prismengineering.com

T: 604.205.5516

 @pumaprism